

© International Baccalaureate Organization 2023

All rights reserved. No part of this product may be reproduced in any form or by any electronic or mechanical means, including information storage and retrieval systems, without the prior written permission from the IB. Additionally, the license tied with this product prohibits use of any selected files or extracts from this product. Use by third parties, including but not limited to publishers, private teachers, tutoring or study services, preparatory schools, vendors operating curriculum mapping services or teacher resource digital platforms and app developers, whether fee-covered or not, is prohibited and is a criminal offense.

More information on how to request written permission in the form of a license can be obtained from <https://ibo.org/become-an-ib-school/ib-publishing/licensing/applying-for-a-license/>.

© Organisation du Baccalauréat International 2023

Tous droits réservés. Aucune partie de ce produit ne peut être reproduite sous quelque forme ni par quelque moyen que ce soit, électronique ou mécanique, y compris des systèmes de stockage et de récupération d'informations, sans l'autorisation écrite préalable de l'IB. De plus, la licence associée à ce produit interdit toute utilisation de tout fichier ou extrait sélectionné dans ce produit. L'utilisation par des tiers, y compris, sans toutefois s'y limiter, des éditeurs, des professeurs particuliers, des services de tutorat ou d'aide aux études, des établissements de préparation à l'enseignement supérieur, des fournisseurs de services de planification des programmes d'études, des gestionnaires de plateformes pédagogiques en ligne, et des développeurs d'applications, moyennant paiement ou non, est interdite et constitue une infraction pénale.

Pour plus d'informations sur la procédure à suivre pour obtenir une autorisation écrite sous la forme d'une licence, rendez-vous à l'adresse <https://ibo.org/become-an-ib-school/ib-publishing/licensing/applying-for-a-license/>.

© Organización del Bachillerato Internacional, 2023

Todos los derechos reservados. No se podrá reproducir ninguna parte de este producto de ninguna forma ni por ningún medio electrónico o mecánico, incluidos los sistemas de almacenamiento y recuperación de información, sin la previa autorización por escrito del IB. Además, la licencia vinculada a este producto prohíbe el uso de todo archivo o fragmento seleccionado de este producto. El uso por parte de terceros —lo que incluye, a título enunciativo, editoriales, profesores particulares, servicios de apoyo académico o ayuda para el estudio, colegios preparatorios, desarrolladores de aplicaciones y entidades que presten servicios de planificación curricular u ofrezcan recursos para docentes mediante plataformas digitales—, ya sea incluido en tasas o no, está prohibido y constituye un delito.

En este enlace encontrará más información sobre cómo solicitar una autorización por escrito en forma de licencia: <https://ibo.org/become-an-ib-school/ib-publishing/licensing/applying-for-a-license/>.

# Geography

## Higher level and standard level

### Paper 1 – resource booklet

4 May 2023

**Zone A** morning | **Zone B** afternoon | **Zone C** morning

---

#### Instructions to candidates

- Do not open this booklet until instructed to do so.
- This booklet accompanies paper 1.

### Option A — Freshwater

1. The map shows the major wetland areas within the Murray–Darling river basin in the state of New South Wales in Australia.

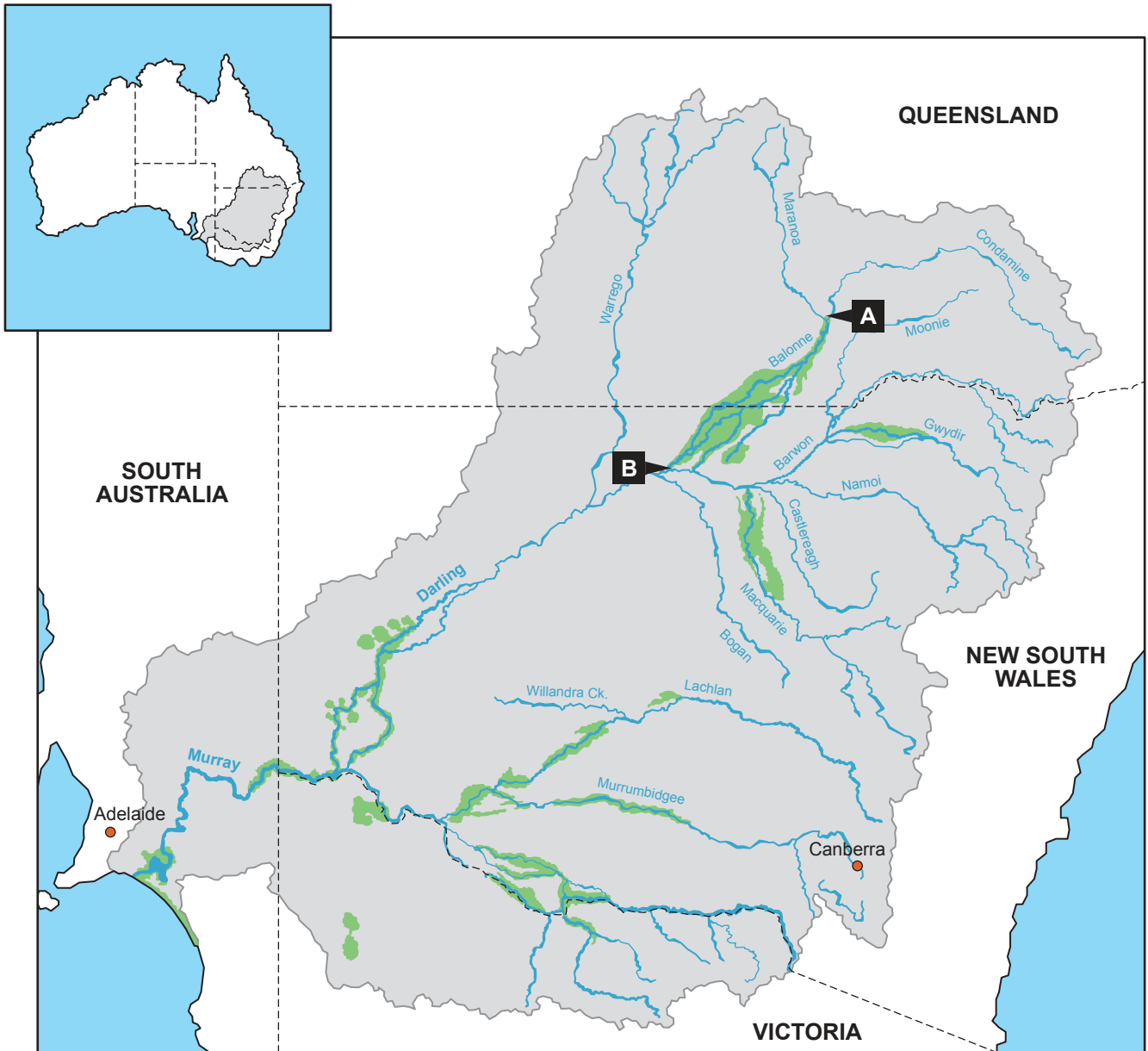
**Key:**

-  Major wetland
-  River
-  City
-  State boundary

**Scale:**



**N**



**Option B — Oceans and coastal margins**

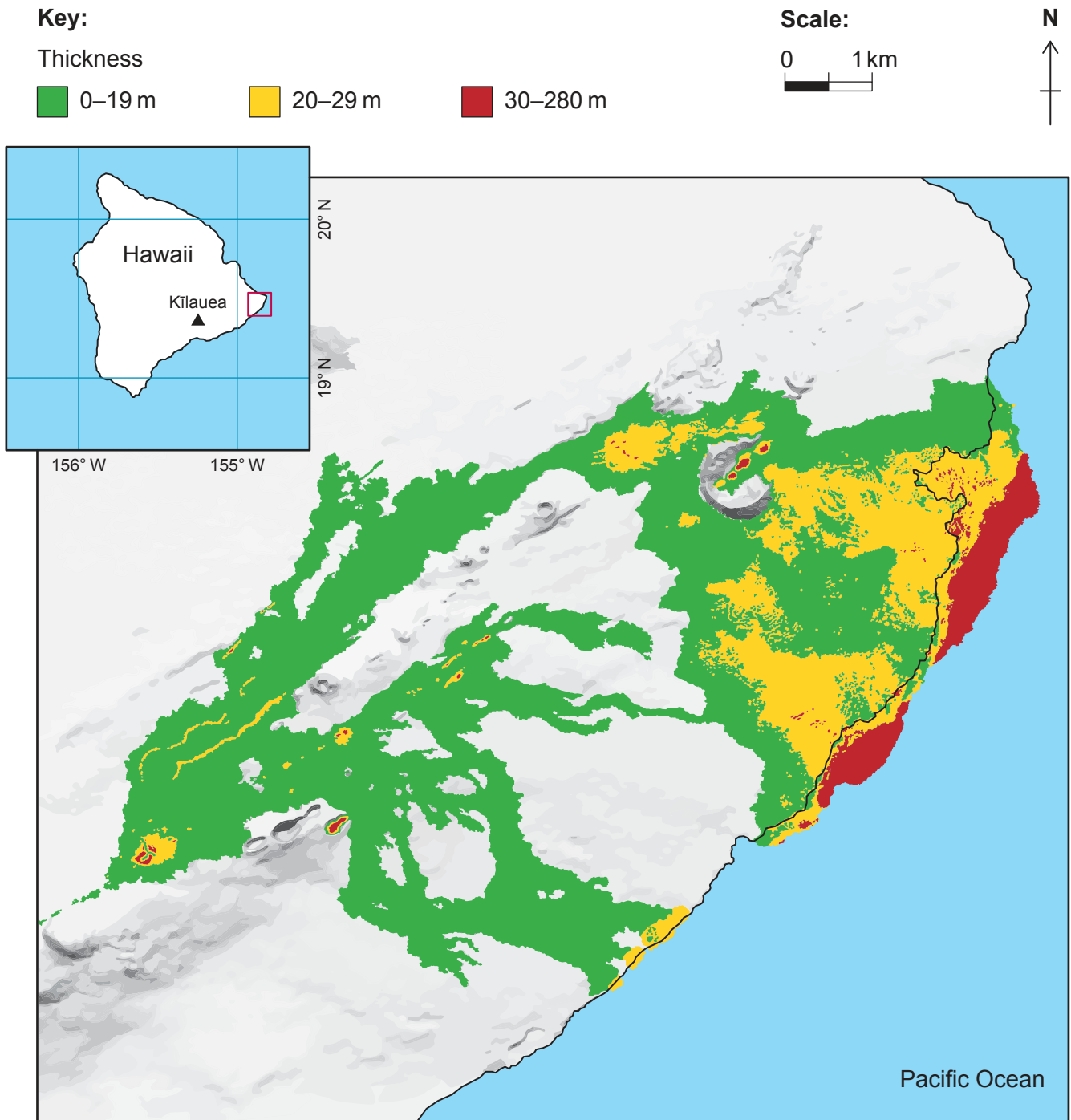
3. The photograph shows the landscape at Cape Foulwind, South Island, New Zealand.



**Turn over**

### Option D — Geophysical hazards

7. The map shows the thickness of the lava flows on the lower slopes from Kīlauea, a shield volcano, following its eruption in 2018.



**Option G — Urban environments**

**13.**

Removed for copyright reasons

**Disclaimer:**

Content used in IB assessments is taken from authentic, third-party sources. The views expressed within them belong to their individual authors and/or publishers and do not necessarily reflect the views of the IB.

**References:**

1. Abel, N. et al. (2016) 'Building resilient pathways to transformation when "no one is in charge": insights from Australia's Murray-Darling Basin', *Ecology and Society*, Volume 21, No. 2. <https://ecologyandsociety.org/vol21/iss2/art23/>. This article is licensed under a Creative Commons Attribution 4.0 International License. <https://creativecommons.org/licenses/by/4.0/>. Source adapted.
7. Hawaiian Volcano Observatory, USGS, 2019. Volcano watch – How is lava flow thickness measured and why does it matter? [online] Available at: <https://www.usgs.gov/news/volcano-watch-how-lava-flow-thickness-measured-and-why-does-it-matter> [Accessed 14 March 2022]. Source adapted.

**All other texts, graphics and illustrations © International Baccalaureate Organization 2023**